



PRINCE WILLIAM
COUNTY

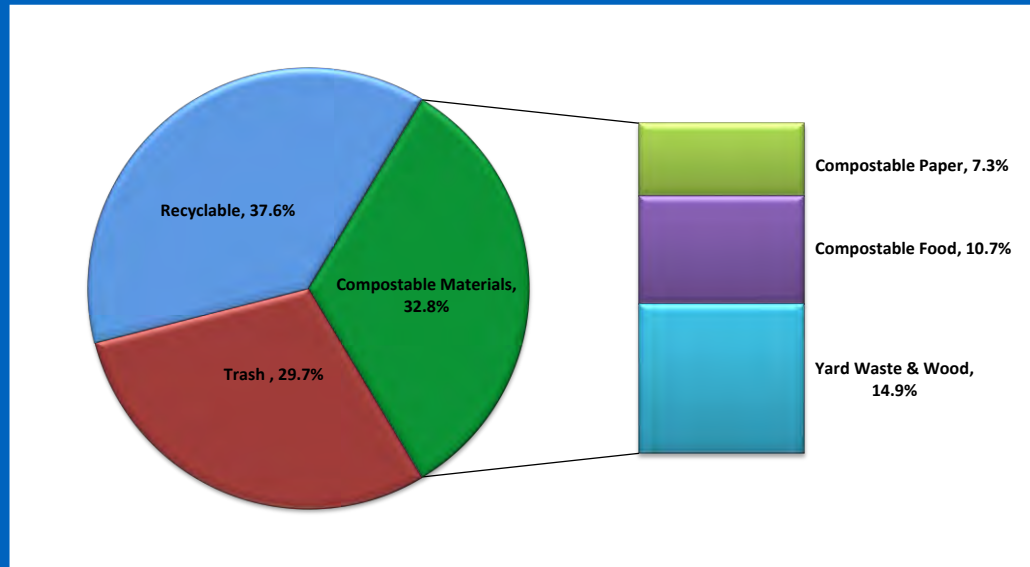
Homeowners' Associations and Condominiums Chapter 22 (Refuse) Code Webinar

Solid Waste Division

www.pwcgov.org/trashandrecycling

April 21, 2021

WHY IS THE COUNTY CHANGING THE WAY YARD WASTE IS MANAGED?

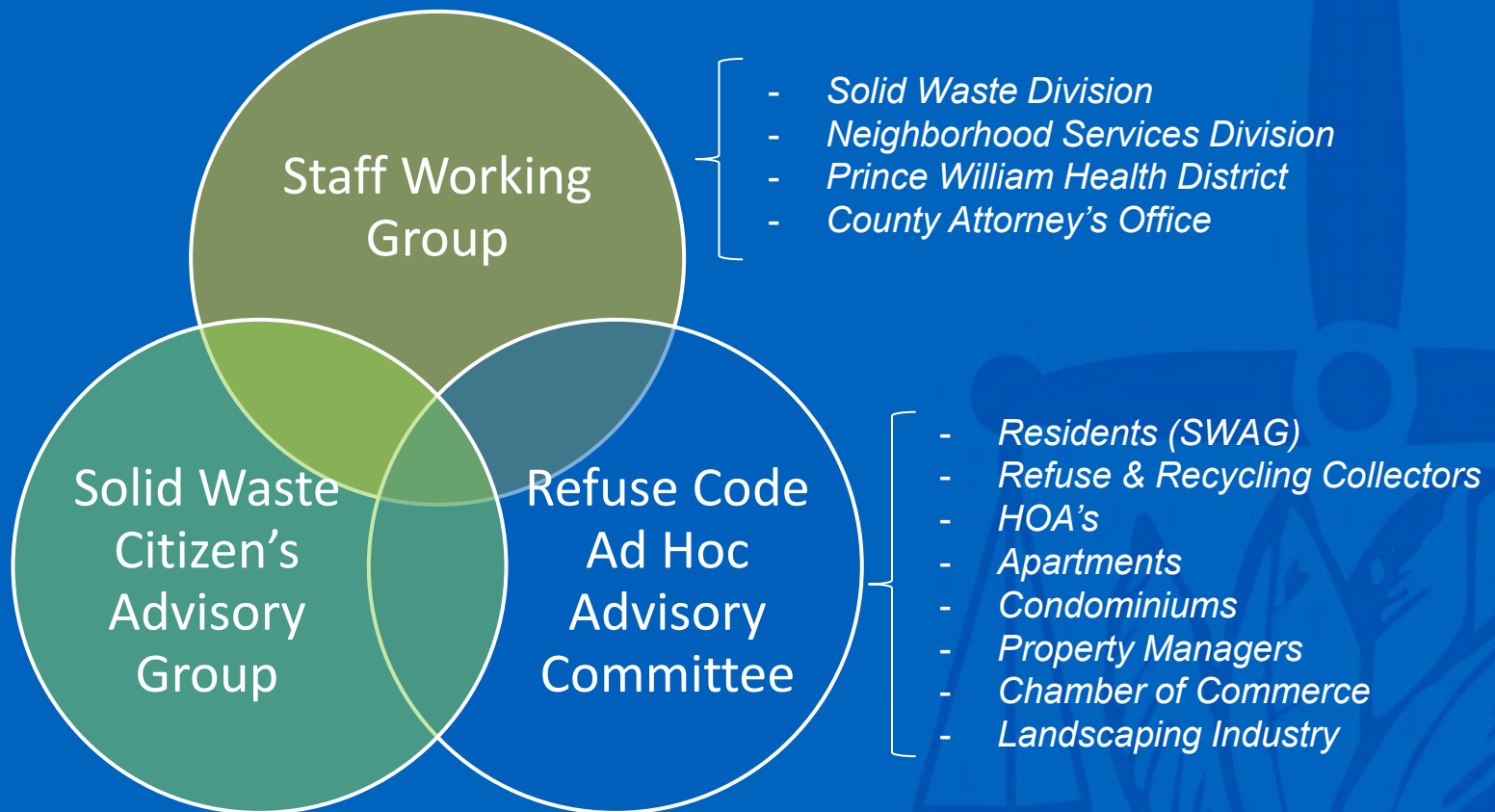


- 2014 study of materials going into our landfill indicated that nearly 1/3 was compostable
- Prince William County is only county in region not requiring yard waste collection
- More sustainable way to manage yard waste

WHAT IS PURPOSE OF CHAPTER 22?

- Chapter 22 (Refuse) addresses:
 - *Solid waste storage, preparation, and collection requirements*
 - *Health and safety nuisances on public and private property*
 - *Littering*
 - *Recycling*
 - *Solid Waste Fee (funding for solid waste infrastructure)*
- The Refuse Code provides the foundation for the County's Solid Waste Management system

WHO WAS INVOLVED IN REFUSE CODE CHANGE?



WHAT ARE THE KEY CHANGES FOR HOMEOWNERS' ASSOCIATIONS AND CONDOMINIUMS?

- Yard waste may not be placed in the regular trash or in plastic bags after October 1, 2021
- Yard waste may no longer be placed in plastic bags after October 1, 2021
- Christmas tree collection during 1st 2 weeks of January
- Recycling containers need to be at least 25% of the volume of accompanying refuse containers
- Notification requirements for property owners, business owners, managing agent of any business or apartment or condominium regarding recycling program



WHEN WILL THE NEW REQUIREMENTS BECOME EFFECTIVE?



Yard Waste Collection in Prince William County Begins October 2021

- *No yard waste placed in trash*
- *Yard waste needs to be placed in biodegradable yard waste bags (not plastic bags)*

WHERE DO THE YARD WASTE REQUIREMENTS APPLY?

- *Single family dwellings*
- *Two family dwellings*
- *Townhomes*
- *Multifamily dwelling units*
- *Mobile homes*
- *Condominiums*
- *Apartments*



WHAT DOES YARD WASTE INCLUDE?



What's Included:

- Leaves
- Grass clippings
- Wood chips
- Shrub and tree trimmings
- Christmas trees (1st 2 full weeks of Jan only)

What's *NOT* Included:

- Roots, stumps, trees or branches exceeding 6 inches in diameter and 4 ft. in length
- Materials > 50 pounds*

*Unless mechanically lifted

HOW SHOULD YARD WASTE BE PREPARED?

Acceptable:

- Leaving clippings on the lawn (or “grasscycling”) is best
- Biodegradable yard waste bags
- Personal container labeled for “yard waste”
- Bundled shrub and tree trimmings up to 6 inches in diameter and 4 ft. in length
- Bundles and containers may not exceed 50 pounds in weight (unless container can be mechanically lifted)



HOW SHOULD YARD WASTE BE PREPARED? (continued)

Unacceptable:

- Loose yard waste and/or brush
- Tree removal
- Yard wastes in cardboard boxes
- Unbundled shrub and tree trimmings up to 6 inches in diameter or 4 ft. in length
- Yard waste containers or bundles exceeding 50 pounds in weight (unless container can be mechanically lifted)



HOW SHOULD BRUSH BE PREPARED?

YES



NO



BRUSH SET OUT REQUIREMENTS:

- *Brush includes tree trimming (excluding stumps, trunks, and branches)*
- *Up to 6 inches in diameter and 4 ft. in length*
- *Bundles cannot exceed 50 lbs.*
- *Bundle with twine/jute (do not use metal or plastic to bundle)*
- *Material must be from general maintenance*
- *Does not include tree removal, land clearing, or development activities*

MINIMUM CONTAINER STANDARDS FOR YARD WASTE CONTAINERS*

Yard Waste Containers:

- Made of durable, watertight, rust-resistant material
- At least 10 gals
- No more than 45 gals
- Must have close-fitting lids
- Handles to facilitate collection



**Containers cannot not exceed 50 pounds in weight (unless capable of being mechanically lifted)*

WHERE DOES THE YARD WASTE GO FOR PROCESSING?



Balls Ford Road Composting Facility

BENEFITS OF IMPROVED MANAGEMENT OF YARD WASTE

- Supports the County's Strategic Plan through the creation of new jobs here in the County—Freestate Farms anticipates hiring 20 positions and additional workers maybe needed by waste haulers
- Achieves the goal from the County's Solid Waste Management Plan to implement countywide yard waste collection
- Extend the life of the landfill by as much as 15 years



RECYCLING DUMPSTER LABLING REQUIREMENTS



25% of Refuse Volume



RECYCLING CONTAINER REQUIREMENTS:

- *Must be at least 25% of volume of accompanying refuse containers*
- *Labeled at each opening in English and Spanish*
- *Include the chasing arrows (recycling symbol)*

RECYCLING NOTIFICATION REQUIREMENTS

- Must notify tenants and employees
- Material separation requirements
- How to prepare materials
- Set out requirements (if applicable)
- Location of recycling containers
- Collection schedule (if applicable)
- Name and phone number of a representative whom the tenant or employee may contact with any questions

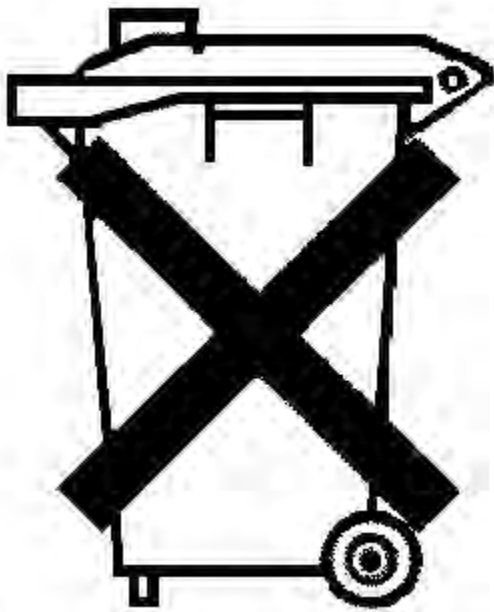


WHAT MATERIALS MUST BE RECYCLED?

- Newspaper
- Cardboard
- Mixed paper
- #1 & #2 plastic bottles, jugs and jars
- Aluminum and steel food and beverage cans
- Christmas trees (during 1st 2 weeks of January only)



HANDLING OF SPECIAL WASTE



Clarified Certain Federal and State Laws for Special Waste

- *Lead-acid batteries*
- *Fluorescent lamps*
- *Mercury-containing thermostats*
- *Cathode-ray tube computer monitors and televisions*
- *Needles or "sharps" need to be prepared properly*

A faint, stylized illustration in the background. It shows a hand at the top holding a vertical pole that supports a balance scale. Below the scale, there is a lotus flower. The entire illustration is rendered in a lighter shade of blue against the main blue background.

Questions?

www.pwcgov.org/trashandrecycling

PWCreycles@pwcgov.org